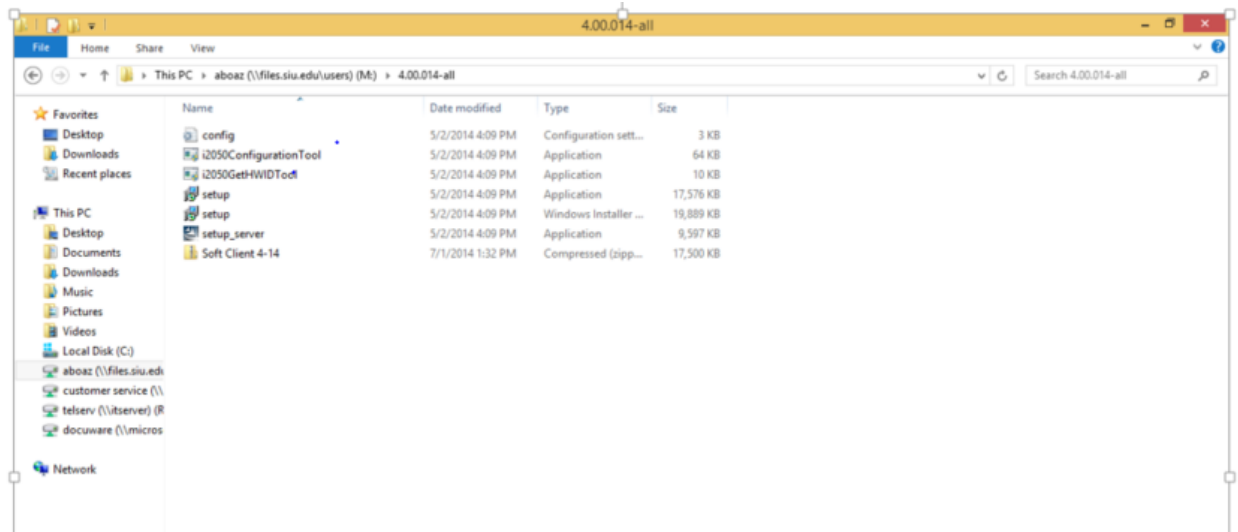


Installation Notes

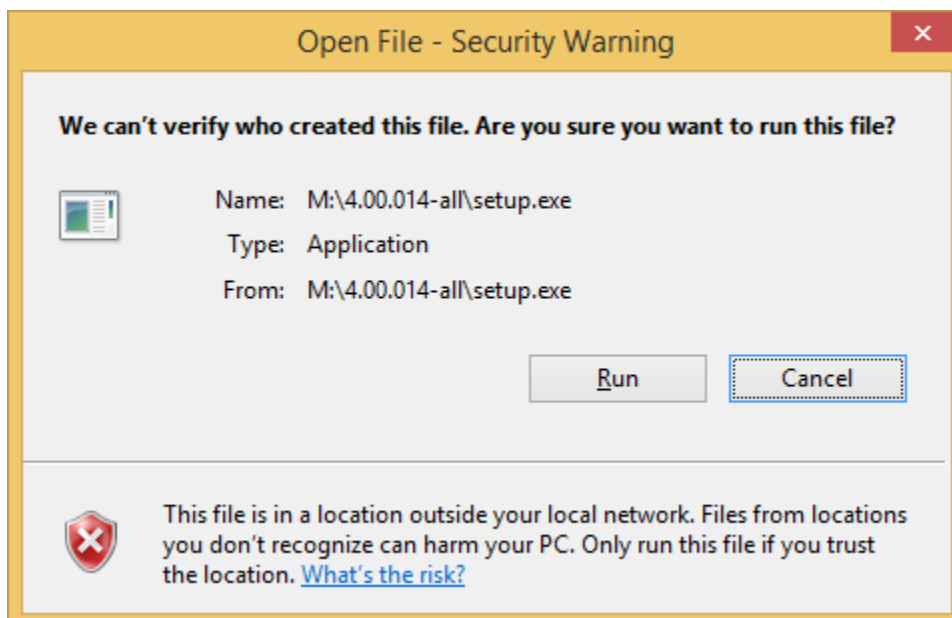
Avaya 2050 IP Softphone

The following are installation notes for the 2050 Softphone. If you have any questions or need assistance please call Saluki Tech at 453-5155 or the Telephone Services Customer Support at 453-2484.

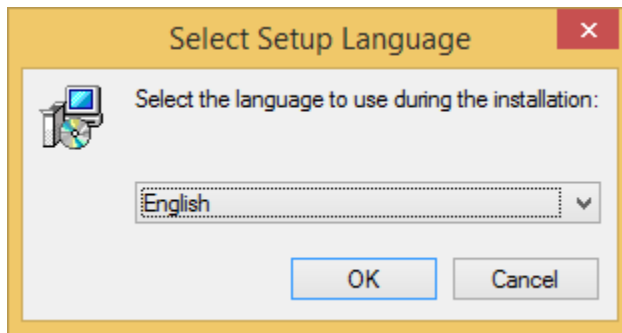
Find the location of the setup.exe file for 4.00.014 and run the file.



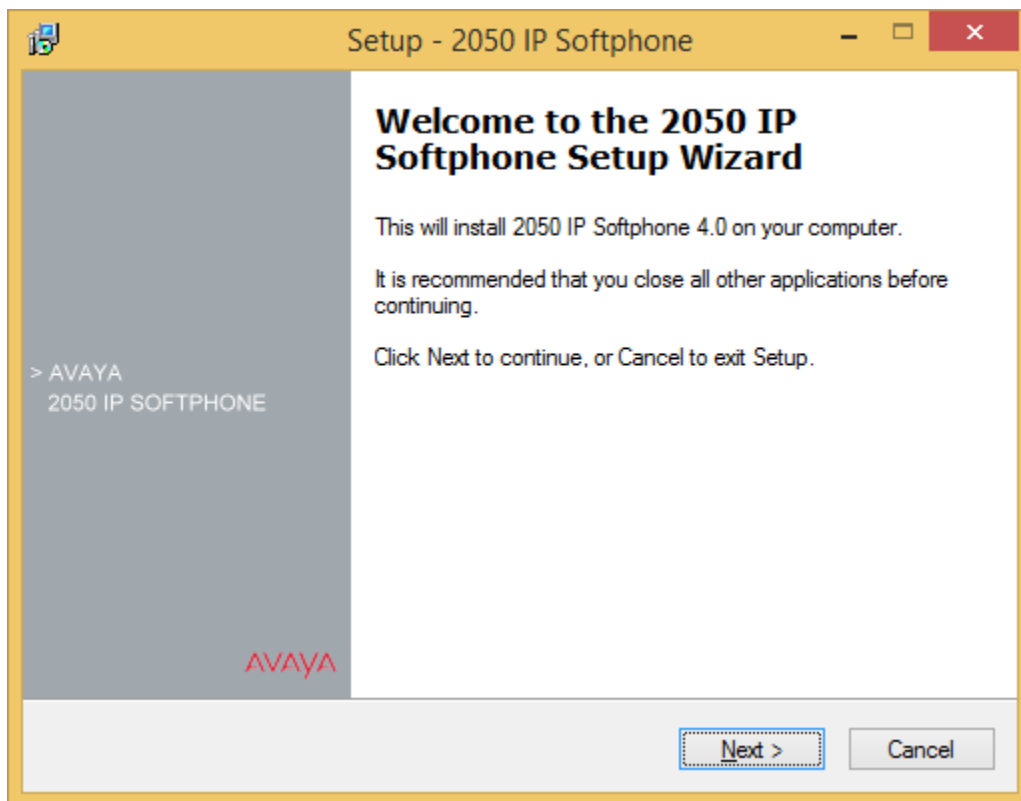
You should see this screen. Click Run



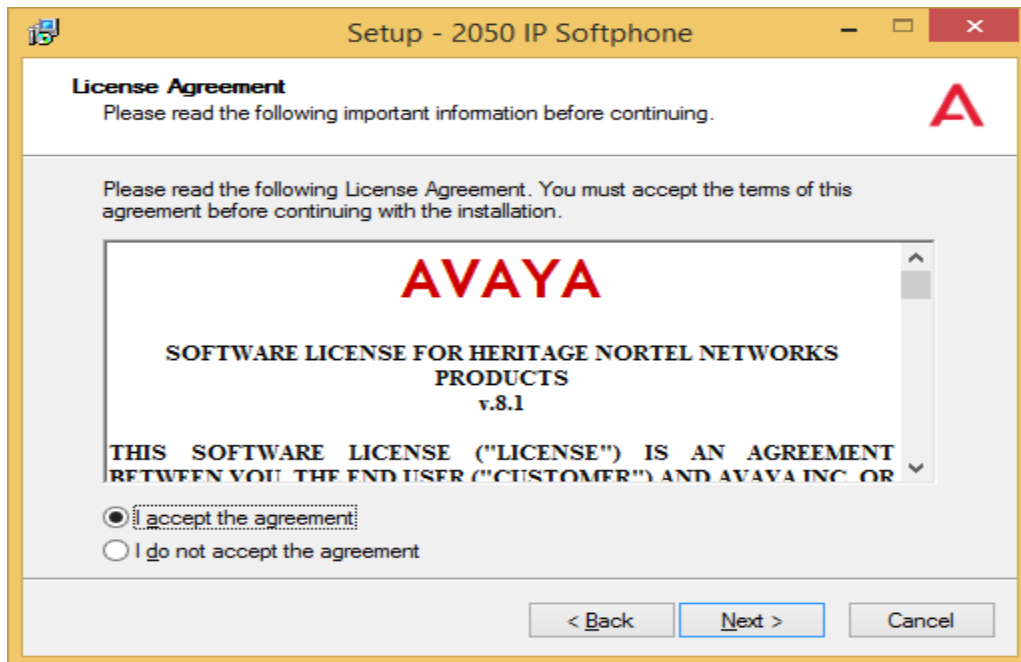
Click OK



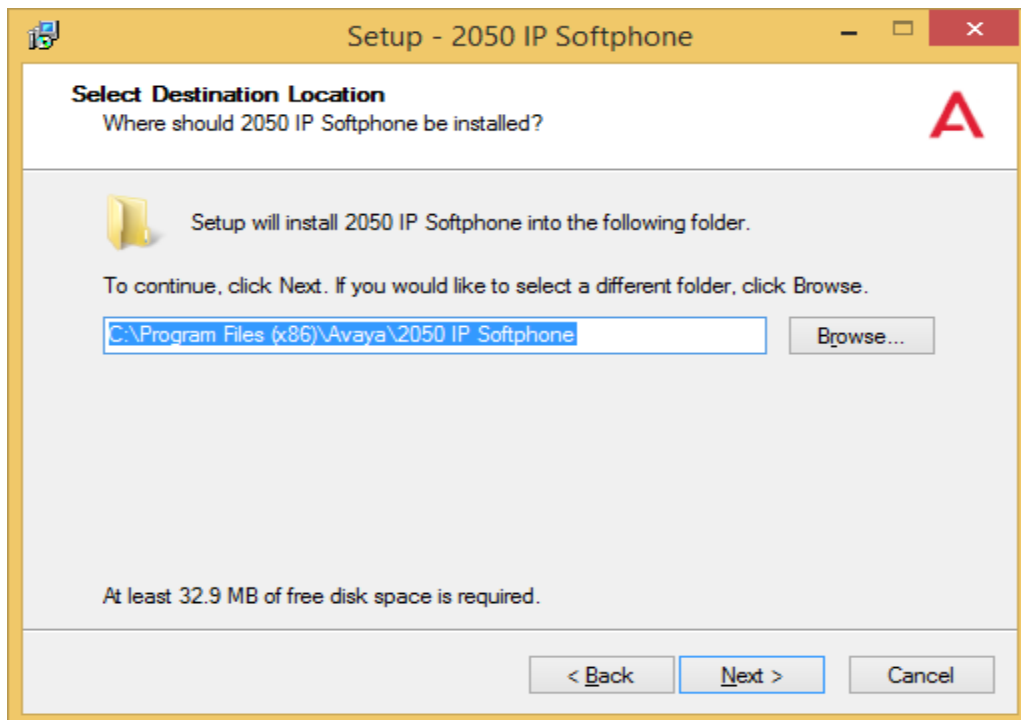
Click Next



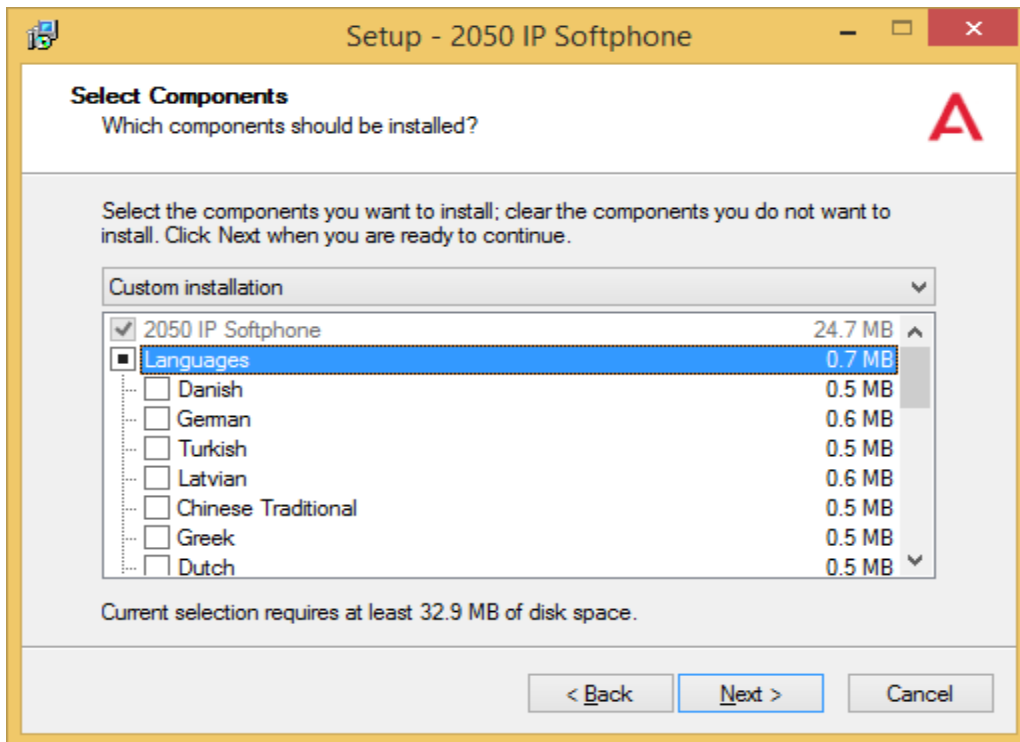
Click I accept the agreement. Then click Next.



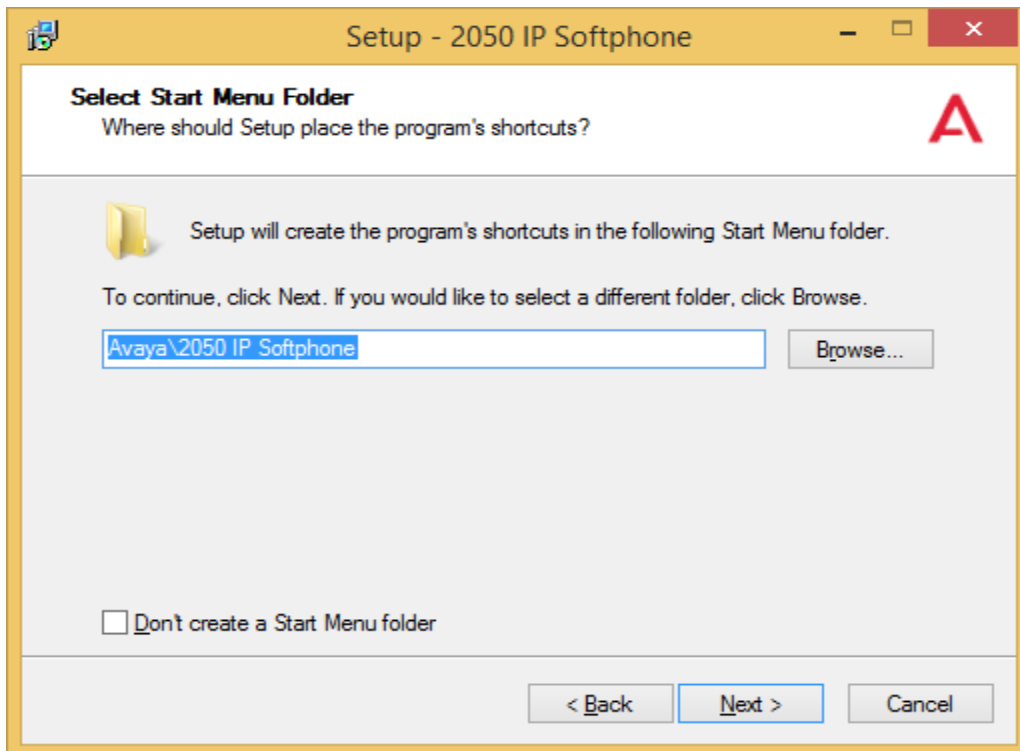
Click Next.



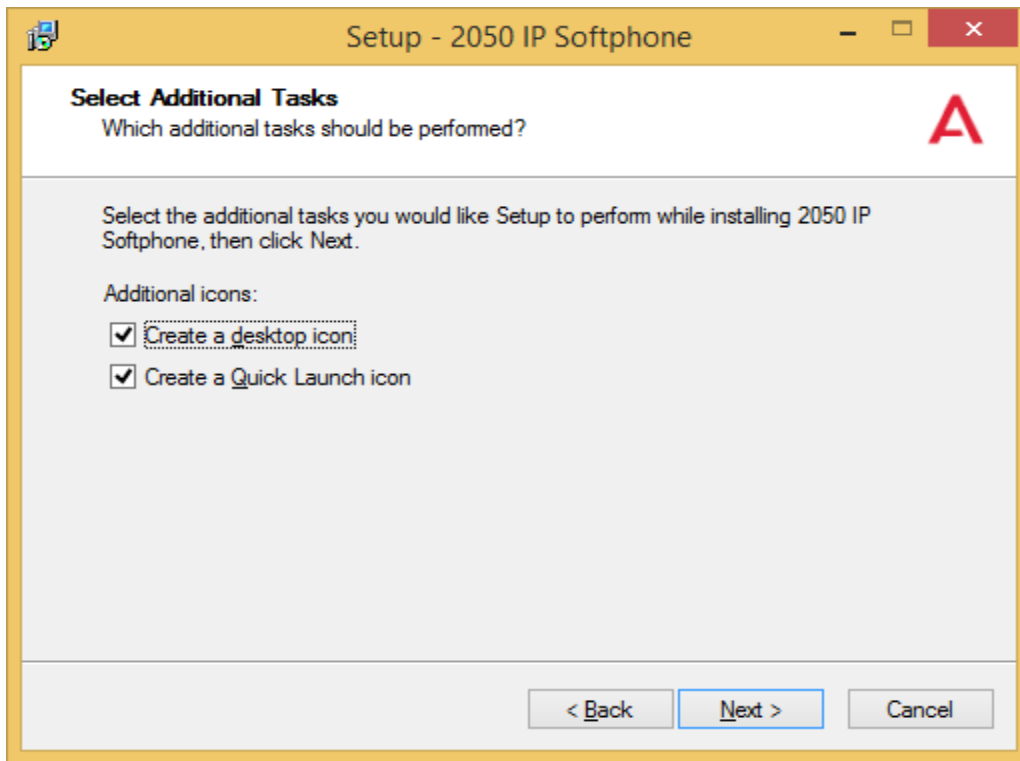
Click languages to clear languages except English. Click Next.



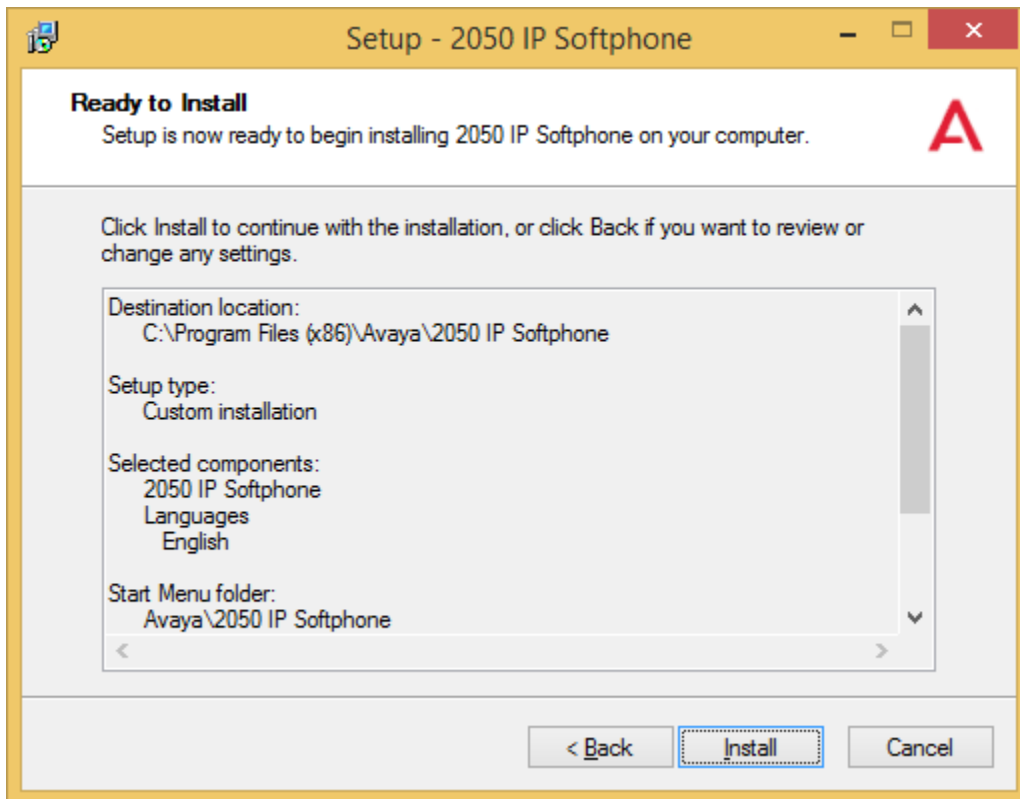
Click Next.



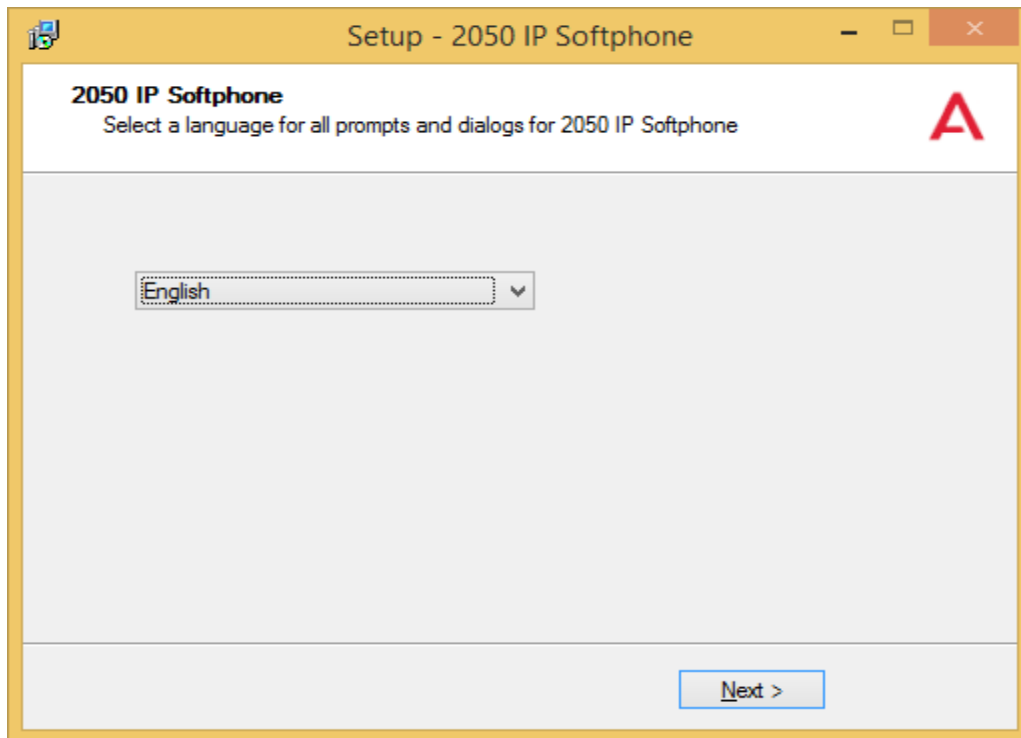
Click Next.



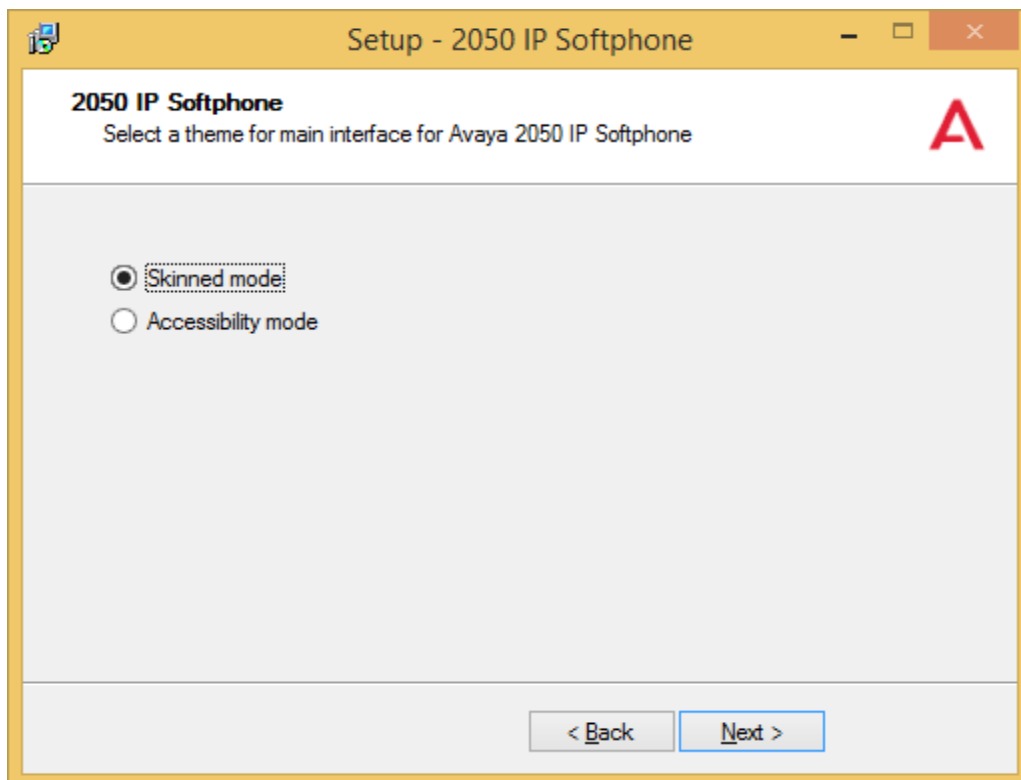
Click Install.



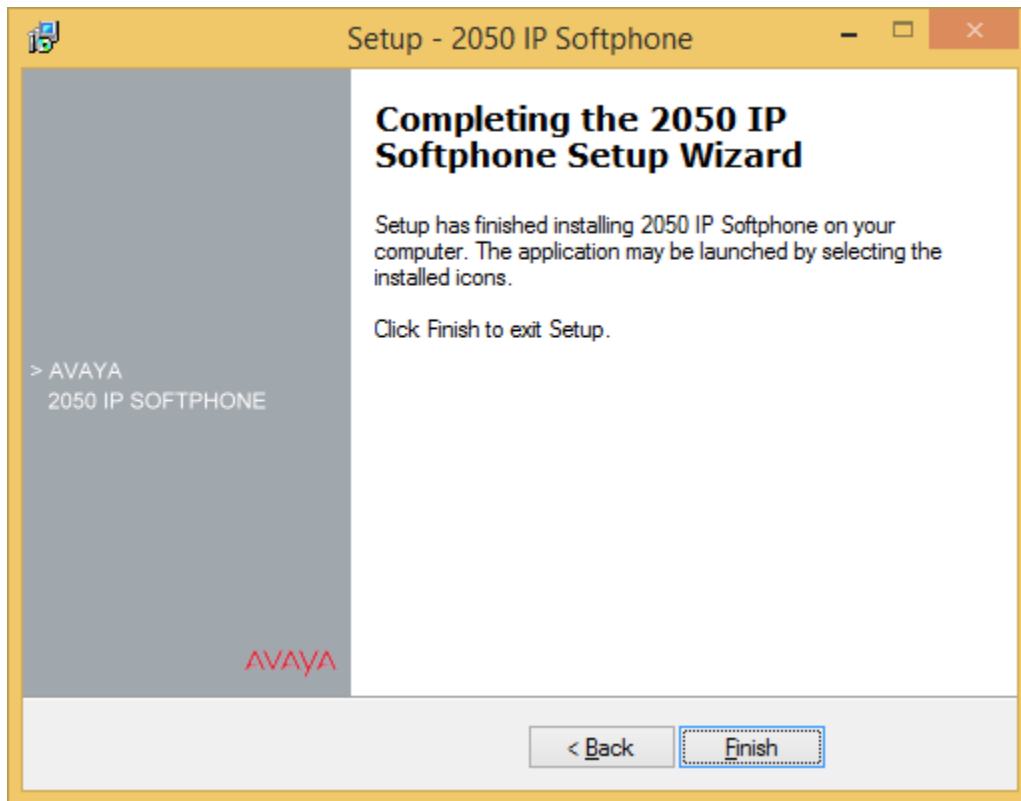
Click Next.



Click Next.



Click Finish.



Configuration Notes

Avaya 2050 IP Softphone

The softphone configuration is simple but necessary for proper functionality. Please complete the following steps for each installation. With the software running...

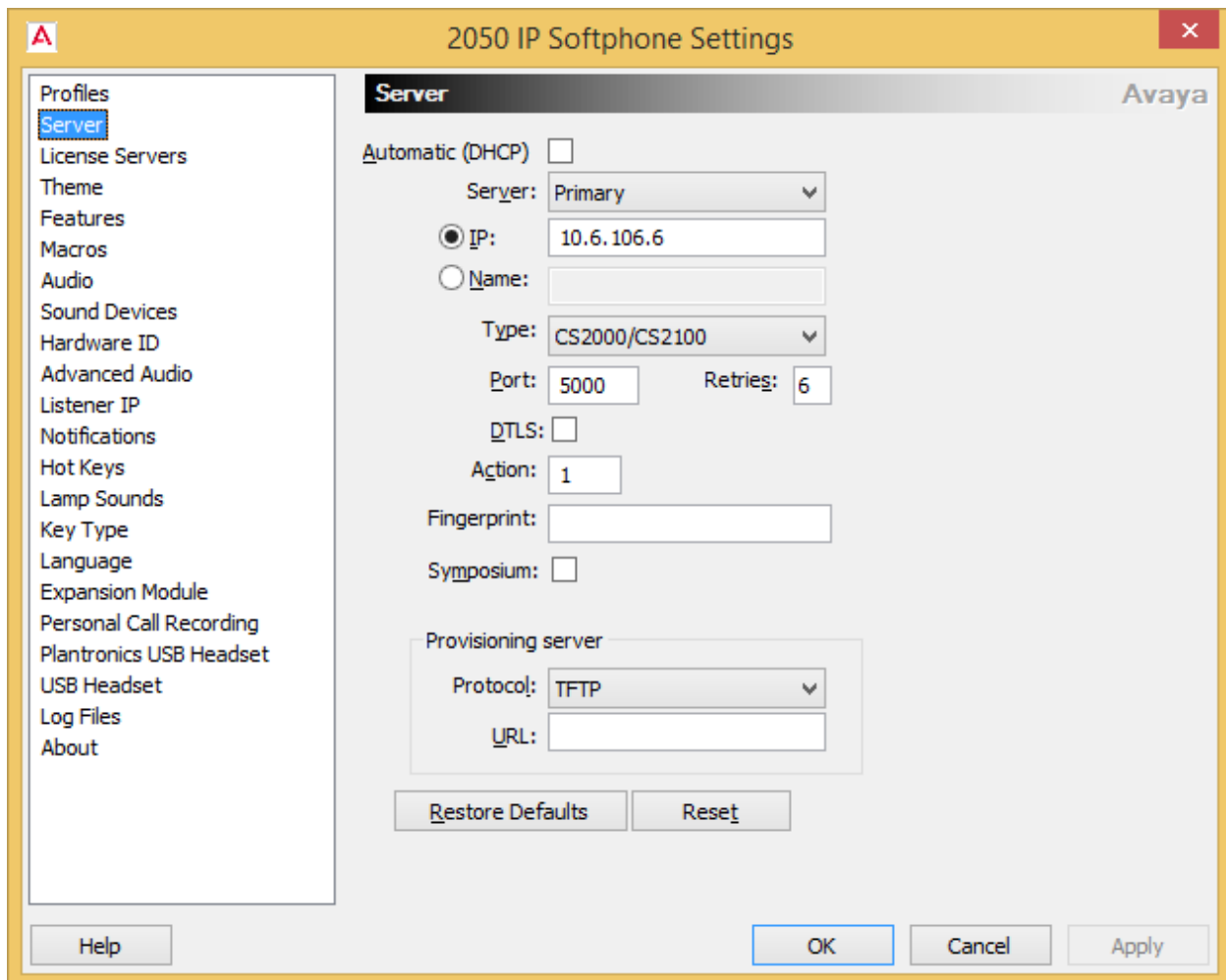
Click on the **A** icon to get the menu options.



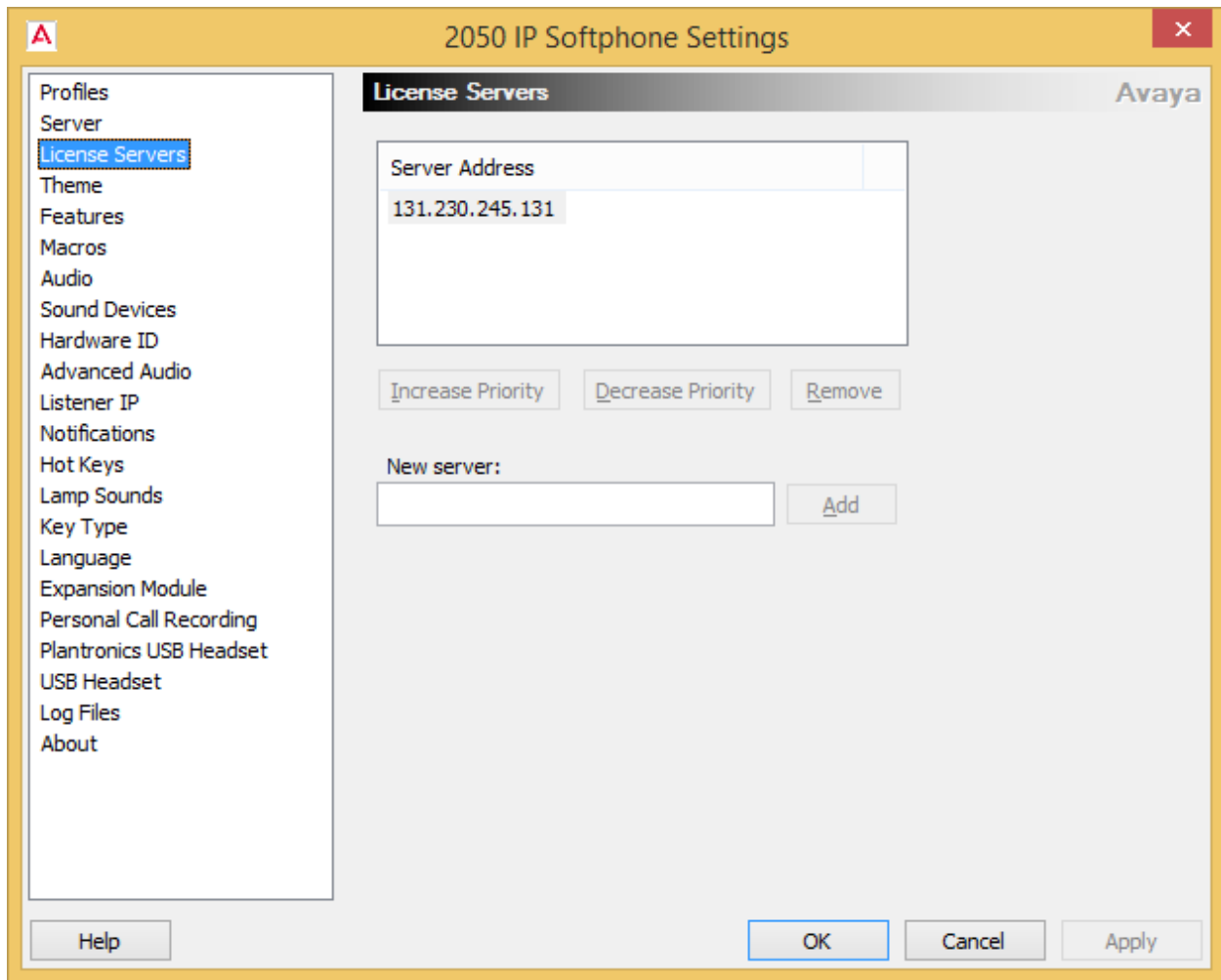
Click File and Settings to make the following changes. Click on Server then...

- Check IP
- Enter 10.6.106.6
- Change the Type to CS2000/CS2100
- Change the Port to 5000
- Set Retries to 6
- Set Action to 1

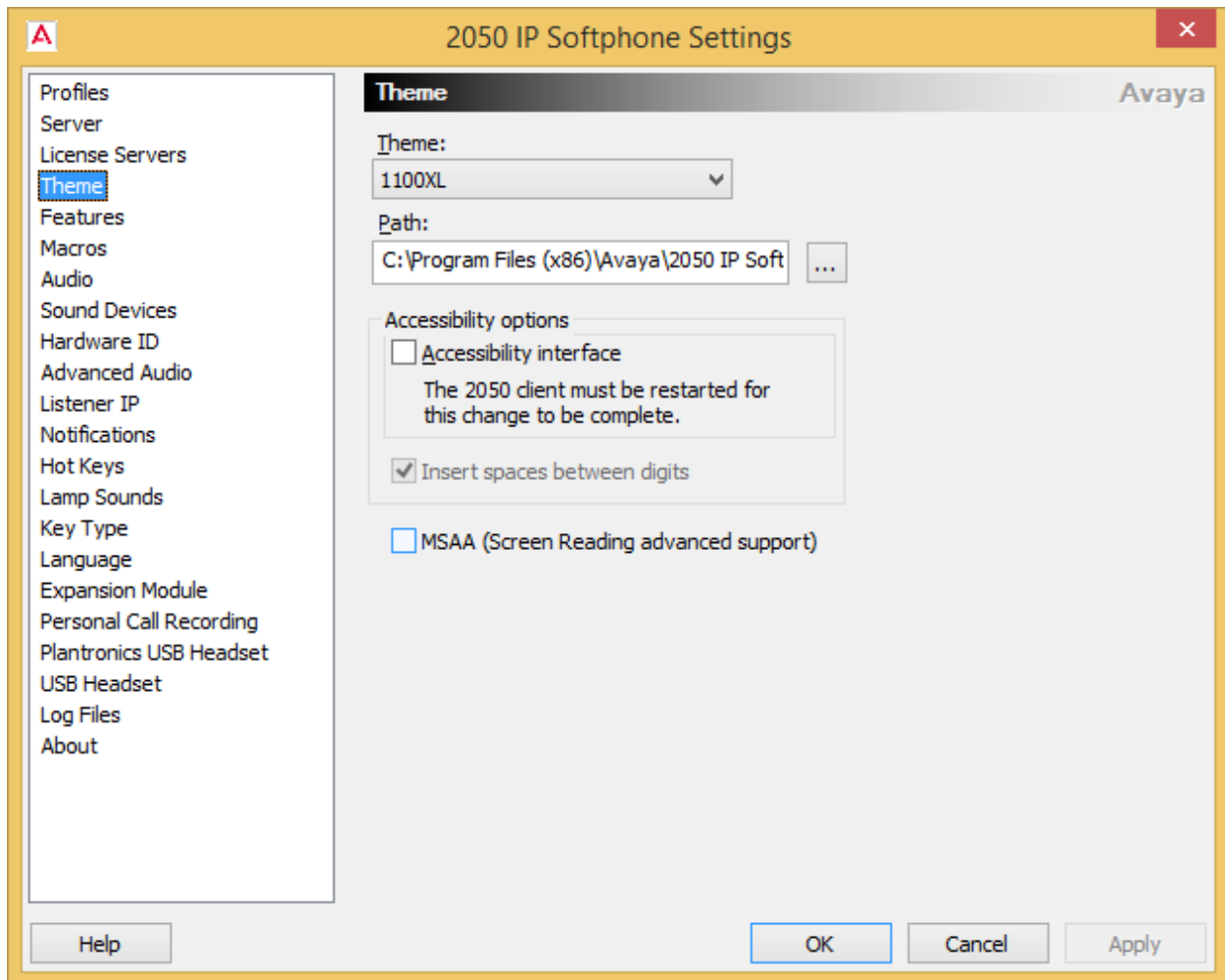
if not already at those settings for both Primary and Secondary servers. You will have to click the down arrow on “Server” to get to the settings for Secondary server.



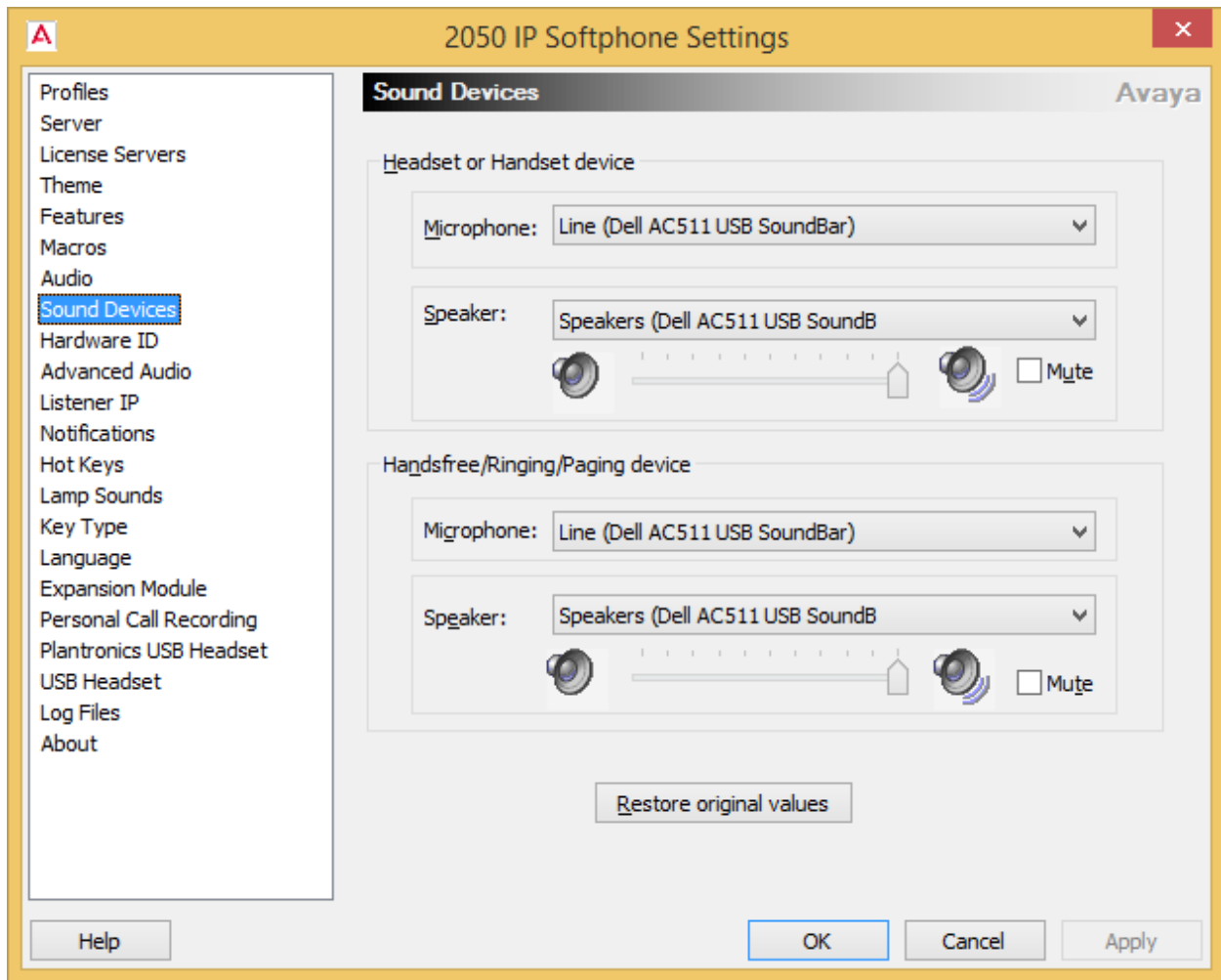
Click on License Servers and enter into the New server: box IP address 131.230.245.131 and click Add.

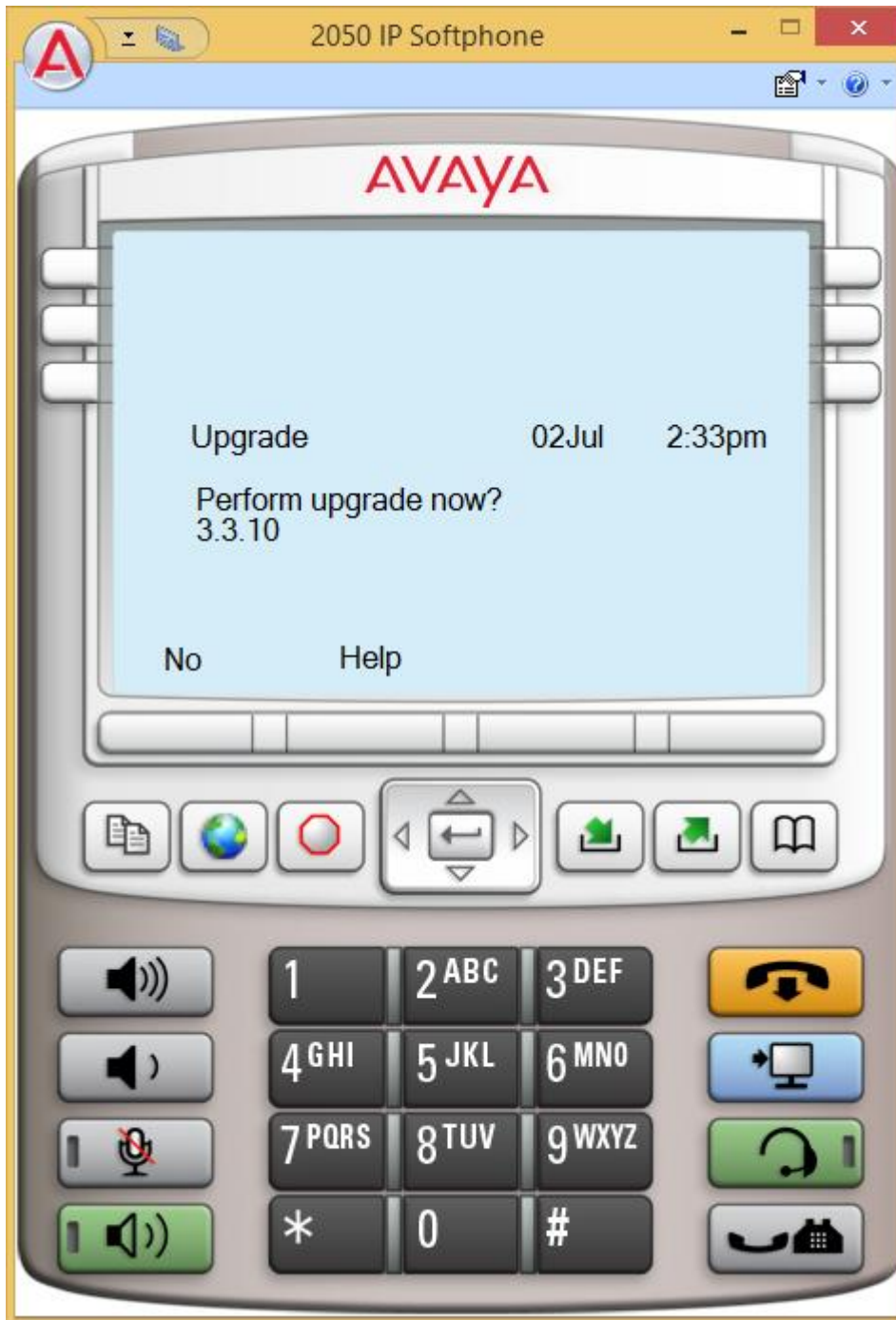


Changing Theme changes the size of the interface.



Change Sound devices to set the headsets.





Last Updated: 07/14/14